

PRIME DAILY

July 8, 2025



U.S. Stocks Pull Back Sharply Amid Renewed Trade Concerns, India Awaits a Trade Deal.

Shares on Wall Street fell after Trump sent letters to 14 countries, including Japan and South Korea, unveiling sharply higher tariffs on imports into the United States, while also postponing their implementation to August 1.

The imposition of a 25% levy on U.S. importers of all goods from key allies Japan and South Korea rattled Wall Street, with the S&P 500 Index dropping sharply; however, markets in Asia took the latest news in stride.

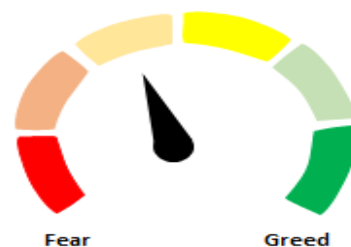
Trump also announced separately that countries aligning with specific policies of the BRICS bloc of developing countries would face an additional 10% tariff.

WTI oil traded higher amid a tight supply market despite OPEC+ hiking output more than expected at its July 6 meeting.

Trump mentioned that the US is close to making a trade deal with India. We believe that if the India-US trade deal is announced, Indian markets will experience a relief rally, even if the deal's terms differ from initial market expectations, the simple removal of uncertainty around higher tariffs should drive this positive response.

Nifty consolidated in the narrow range of 80 points throughout the session yesterday. The short-term trend of the Nifty remains positive, as it is positioned above its important moving averages. Immediate support for the Nifty is now seen at 25,331, while resistance is expected to stay in the range of 25,600-25,670, as the market awaits clarity on the evolving global trade landscape.

Indian indices are poised to open lower, in line with cues from the US market, and are likely to track developments related to the US-India trade deal.



| Global Equity Indices | | | |
|-----------------------|--------|-------------|----------|
| | Close | Abs. Change | % Change |
| Indian Indices | | | |
| Sensex | 83,443 | 9.6▲ | 0.01% |
| Nifty | 25,461 | 0.3▲ | 0.00% |
| Midcap | 59,516 | -162.0▼ | -0.27% |
| Small cap | 18,950 | -82.9▼ | -0.44% |
| European Indices | | | |
| FTSE | 8,807 | -16.4▼ | -0.19% |
| DAX | 24,074 | 286.2▲ | 1.20% |
| CAC | 7,723 | 27.2▲ | 0.35% |
| Asian Indices | | | |
| Shanghai | 3,490 | 18.1▲ | 0.52% |
| Hang Seng | 24,077 | 160.9▲ | 0.67% |
| Nikkei | 39,711 | -99.6▼ | -0.25% |

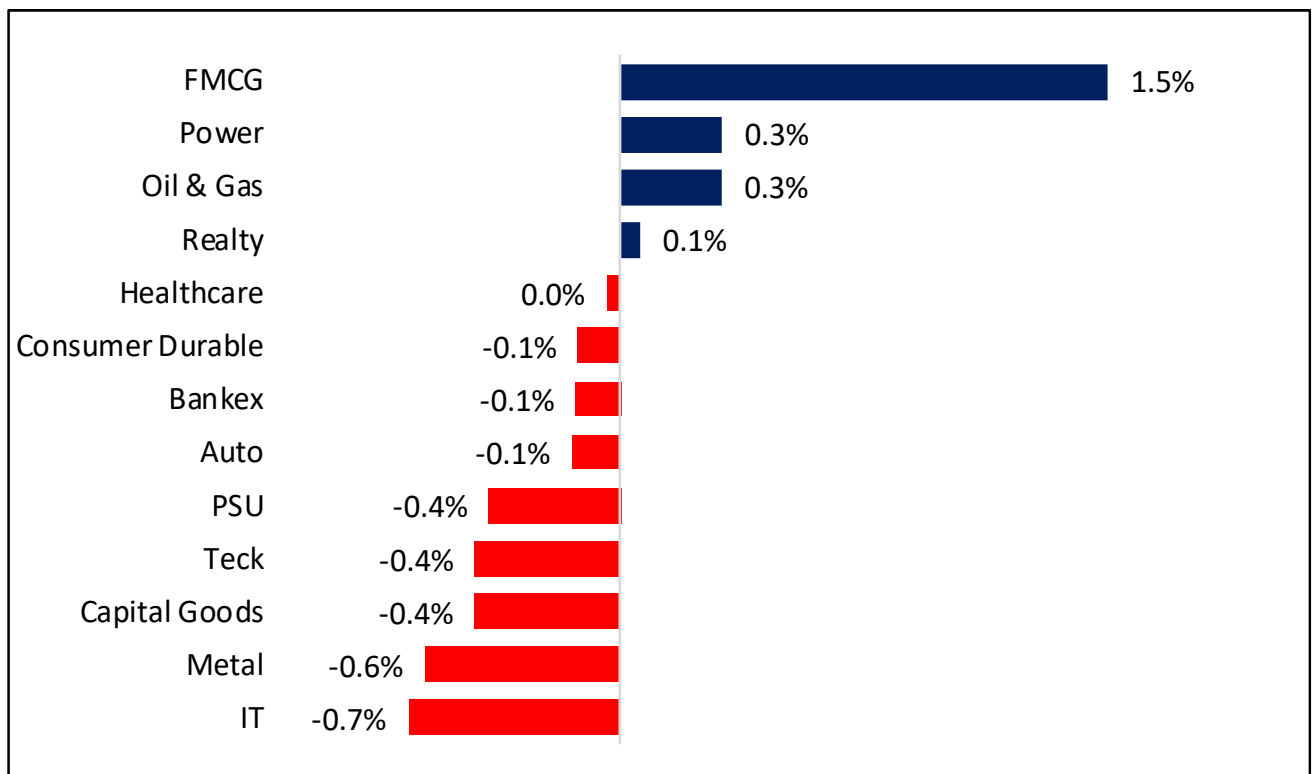
| Indices Futures | | | |
|------------------|--------|-------------|----------|
| | Close | Abs. Change | % Change |
| IFSC Nifty | | | |
| IFSC Nifty | 25,519 | 43.0▲ | 0.17% |
| US Indices | | | |
| Dow Jones | 44,638 | -39.0▼ | -0.09% |
| S&P 500 | 6,277 | 1.0▲ | 0.02% |
| Nasdaq | 22,925 | 39.8▲ | 0.17% |
| European Indices | | | |
| FTSE | 8,795 | -23.0▼ | -0.26% |
| DAX | 24,123 | -27.0▼ | -0.11% |
| Asian Indices | | | |
| Shanghai | 3,950 | 31.0▲ | 0.79% |
| Hang Seng | 24,089 | 224.0▲ | 0.94% |
| Nikkei | 39,770 | 230.0▲ | 0.58% |

Nifty50 Index Contributors

| Top Five (Positive Contributors) | | |
|----------------------------------|--------|----------|
| Stock | Points | % Change |
| RELIANCE | 21.2 | 0.08 |
| HINDUNILVR | 13.9 | 0.05 |
| BHARTIARTL | 10.0 | 0.04 |
| ITC | 7.4 | 0.03 |
| KOTAKBANK | 6.5 | 0.03 |

| Bottom Five (Negative Contributors) | | |
|-------------------------------------|--------|----------|
| Stock | Points | % Change |
| ICICIBANK | -11.2 | -0.04 |
| INFY | -10.9 | -0.04 |
| BEL | -8.3 | -0.03 |
| TECHM | -4.4 | -0.02 |
| ETERNAL | -4.4 | -0.02 |

BSE Sectoral Leaders & Laggards

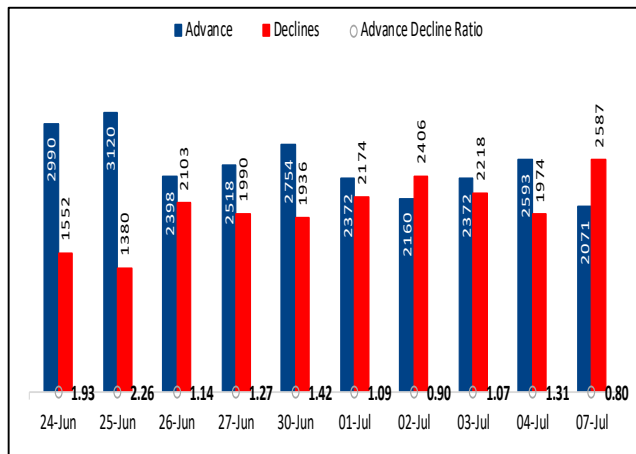


Nifty50 Index Top Pops & Drops

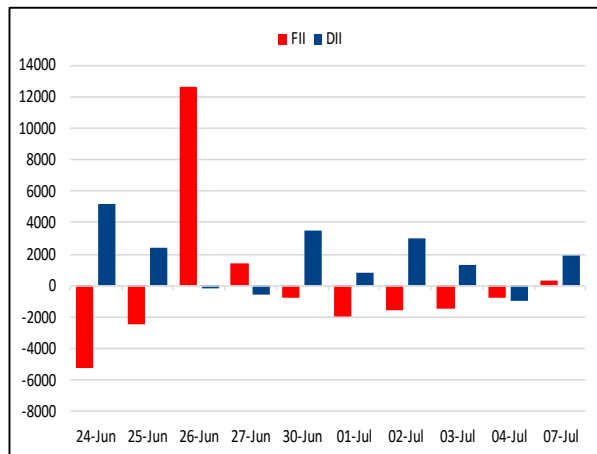
| Nifty50 Top Five Gainers | | | |
|--------------------------|---------|----------|------------|
| Symbol | LTP | % Change | Volume |
| HINDUNILVR | 2,410.4 | 3.04 | 2,701,583 |
| NESTLEIND | 2,422.1 | 1.22 | 434,207 |
| TATACONSUM | 1,101.9 | 1.12 | 1,152,136 |
| JIOFIN | 328.1 | 0.95 | 13,172,854 |
| EICHERMOT | 5,682.5 | 0.95 | 227,078 |

| Nifty50 Top Five Losers | | | |
|-------------------------|----------|----------|------------|
| Symbol | LTP | % Change | Volume |
| BEL | 417.1 | -2.44 | 22,221,724 |
| TECHM | 1,623.9 | -1.89 | 1,550,115 |
| ONGC | 241.5 | -1.52 | 9,222,263 |
| ULTRACEMCO | 12,345.0 | -1.29 | 149,939 |
| ETERNAL | 258.6 | -1.09 | 25,446,186 |

BSE Advance & Declines



Institutional Activities



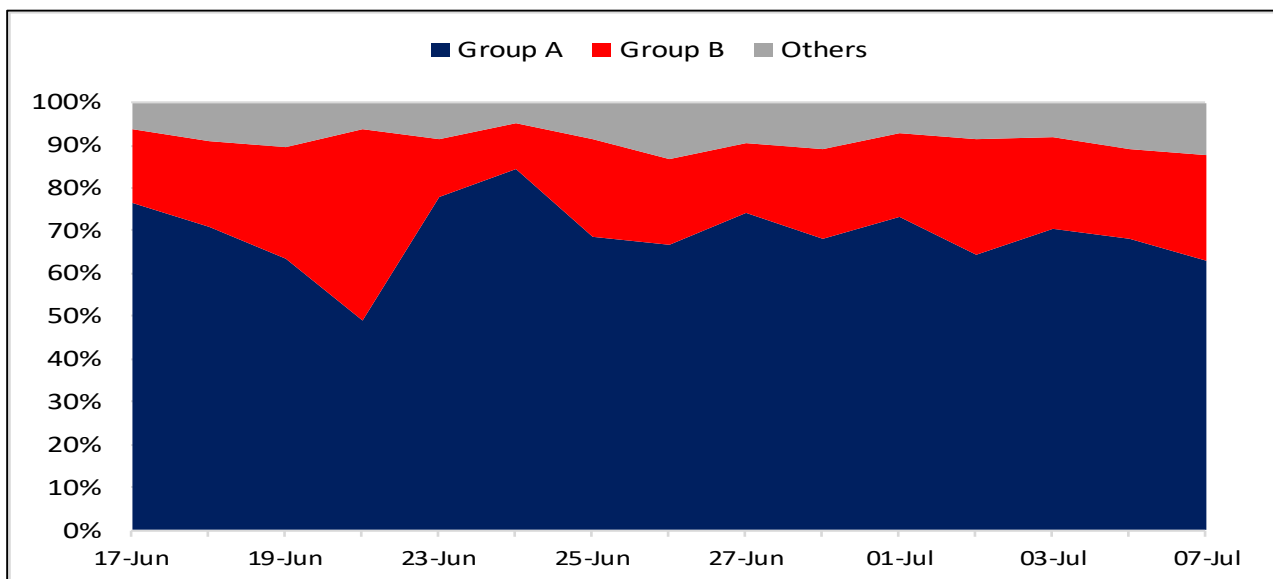
52 Week High Stocks

| | 7-Jul-25 | 4-Jul-25 |
|---|----------|--------------|
| BSE Universe | 199 | 178 |
| BSE Group A Stocks Hitting 52 Week High | | |
| Stocks | Price | 52 Week High |
| MUTHOOTFIN | 2659.7 | 2691.9 |
| NAVINFUOR | 4861.5 | 4999.9 |
| RAMCOCEM | 1084.4 | 1109.0 |
| APOLLOHOSP | 7615.3 | 7625.0 |
| EIDPARRY | 1092.0 | 1137.6 |




52 Week Low Stocks

| | 7-Jul-25 | 4-Jul-25 |
|--|----------|-------------|
| BSE Universe | 72 | 73 |
| BSE Group A Stocks Hitting 52 Week Low | | |
| Stocks | Price | 52 Week Low |
| JINDWORLD | 48.2 | 47.8 |
| PROTEAN | 828.7 | 828.0 |
| | | |
| | | |
| | | |

BSE Cash Market Turnover Participant-wise



News Highly Sensitive to Stock Price

| Impact | Stock | News |
|---|-----------------------------|--|
|  | Macrotech Developers | Macrotech Developers reported a 10% year-on-year increase in pre-sales to Rs 4,450 crore for the quarter, while collections rose 7% to Rs 2,880 crore. The firm said it has added five new projects across Mumbai, Pune and Bengaluru, with a total gross development value (GDV) of Rs 22,700 crore, over 90% of its full-year business development guidance of Rs 25000 crore. Net debt stood at Rs 5080 crore as of Jun-2025. |
|  | Titan | Jewellery vertical saw domestic operations grow approximately 18% year-on-year, aided by good traction during Akshaya Tritiya. However, a sharp rise in gold prices from May to mid-June dented consumer sentiment, leading to flat buyer growth in both Tanishq and CaratLane. In this high-price environment, consumers preferred lightweight and lower karatage jewellery, with plain gold growing in mid-teens and the studded segment in early double digits. |
|  | Tata Motors | Jaguar Land Rover reported 10.7 percent year-on-year decline in dispatches to dealers for the first quarter, totaling 87,286 units. Wholesale volumes decreased in North America, Europe, and the UK. The UK market faced the biggest impact due to the cessation of legacy Jaguar models. Retail sales also saw a dip of 15% at 94,420 units. |

| Stock | News |
|---------------------|--|
| DCX Systems | The Industrial Licensing Section, Office of the Development Commissioner, Cochin Special Economic Zone (CSEZ), EOU's & SEZ's in Karnataka, under the Ministry of Commerce & Industry, Government of India, has granted an Industrial license to DCX Systems for the manufacturing of the - Production, Assembly and Testing of Radar Systems and EW Systems, and Integration and Manufacture of Avionics & Defence Electronic Equipment. |
| Oil and Gas | OPEC+ oil producers are set to approve another big output boost for September as they complete the unwinding of voluntary output cuts by eight members and allow the United Arab Emirates to pump more to meet a larger quota. |
| JSW Infra | Company received a letter of award (LoA) from the Syama Prasad Mookerjee Port Authority for a Rs 740 crore port project that is aimed at enhancing container handling capacity at the facility. The LoA is for the reconstruction of berth 8 and mechanization of berths 7 at Netaji Subhas Dock, the company said. |
| Acme Solar | Company placed an order for more than 3.1 GWh of BESS to procure high-efficiency and scalable storage solutions from Zhejiang Narada and Trina Energy. |
| Tega | Tega McNally Minerals, a wholly owned subsidiary of Tega Industries, has appointed Sourav Sen as Chief Executive Officer, with effect from 08 July 2025. Sen has been appointed in place of Syed Yaver Imam who has decided to step down as CEO due to personal pre-occupations. |
| Phoenix Mills | Phoenix Mills reported a 12% year-on-year increase in retail sales across its operational malls in Q1 FY26, supported by healthy demand and continued momentum across its portfolio. In the commercial office segment, gross leasing of approximately 4.07 lakh square feet was completed. |
| Kotak Mahindra Bank | The bank reported a net advance at the end of Q1 FY26 stood at Rs 4.45 lakh crore, marking a 14% increase over Rs 3.90 lakh crore in the same quarter last year. Sequentially, lending activity was up 4.2% compared to Rs 4.27 lakh crore in the March 2025 quarter. On the liabilities side, the bank's end-of-period (EOP) total deposits rose to Rs 5.13 lakh crore, up 14.6% from Rs 4.47 lakh crore in Q1 FY25 and 2.8% higher than Rs 4.99 lakh crore in Q4 FY25. |

| Stock | News |
|-----------------------------|--|
| AMC companies | SEBI has proposed review of regulatory framework for the business activities of an Asset Management Companies (AMCs) of Mutual Funds. Sebi has proposed allowing mutual funds to act as point of presence for pension funds to act as global distributor of funds, subject to conditions. Sebi has also proposed relaxation in broad basing requirements, offering investment management and advisory services to pooled funds such as family offices or offshore funds with a few investors. |
| Navin Fluorine | Navin Fluorine International Ltd announced the launch of its qualified institutions placement (QIP) to raise up to Rs 750 crore by issuing equity shares. It has fixed Rs 4798 per equity share as floor price. |
| Krsnaa Diagnostics | In continuation to the previously intimations submitted by the Company, regarding the Letter of Acceptance (LoA) issued by the National Health Mission, Rajasthan (Authority) for providing laboratory services under the Free Diagnostics Initiative on Hub and Spoke Model under NHM across Rajasthan. Hon'ble High Court of Rajasthan had passed an order in favour of Krsnaa Diagnostics Limited and its consortium partner, Telecommunications Consultants India Ltd. (TCIL). In terms of the said order, the Authority, the company, and the consortium partner were directed to proceed ahead with the execution of the agreement as per the terms stipulated therein. |
| Sandhar Technologies | Company has successfully completed the sale transaction and executed Sale Deed with the purchaser on 07th July, 2025 for a total consideration of Rs 61 crore. An initial consideration of Rs 15 crore was received at the time of execution of the Agreement to Sale. The balance consideration of Rs 45.39 crore excluding the amount of TDS was duly received through demand draft on execution of Sale Deed. |
| NLC India | The company approved to make an investment of up to Rs 1,631 crore in one or more tranches in its arm through equity and also approved to borrow US\$ 100 million from Sumitomo Mitsui Banking Corp. |
| M&M | M&M reported a 20% year-on-year (YoY) rise in production for June 2025, reaching 83,435 units compared to 69,441 units in the same month last year, according to its Q1 business update. Sales for the month stood at 76,335 units, marking a 14% increase from 66,800 units a year earlier. Export volumes rose marginally by 1% to 2,634 units, up from 2,597 units in June 2024. |

| Stock | News |
|-----------------------------|---|
| P N Gadgil Jewellers | The company reported a 2.8% year-on-year increase in total revenue at Rs 1,714 crore for the first quarter of FY26, up from Rs 1,668 crore a year ago. Excluding the discontinued refinery segment, revenue grew 30.4% YoY to Rs 1,714 crore. The retail segment, which accounts for over 70% of total revenue, grew 19.4% YoY. |
| Puravankara | The company said it secured the redevelopment rights of eight residential societies in Chembur, Mumbai. The project has a redevelopment potential of 1.2 million square feet, with an estimated gross development value (GDV) of Rs 2,100 crore |
| Refex Industries | The company has received Rs 250 crore order for comprehensive ash disposal along with operation of fly ash systems. It is to be executed over the next 30 months. |

Key Events

Eurozone Retail Sales Drop For First Time In 5 Months; Services Output Fall

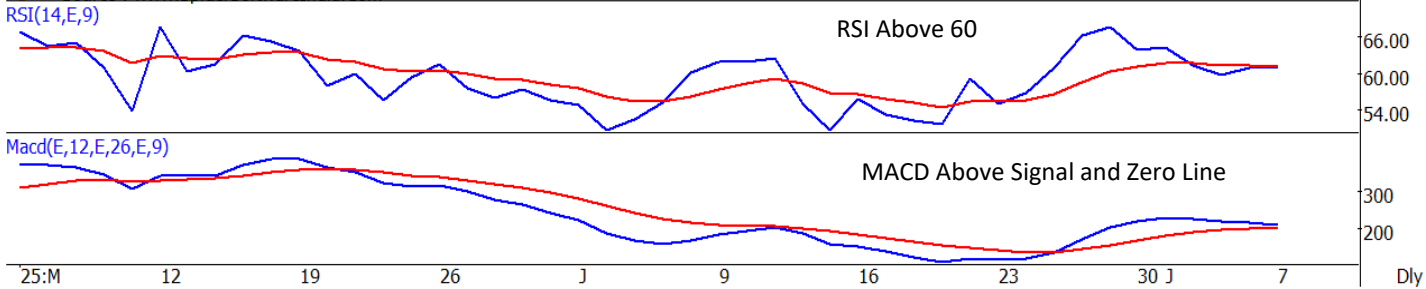
Euro area retail sales decreased for the first time in five months and services production declined in May, suggesting a slowdown in the second quarter. Retail sales logged a monthly fall of 0.7 percent in May, reversing April's 0.3 percent increase, Eurostat reported Monday. Sales were expected to drop 0.8 percent. Another data from Eurostat showed that services production decreased 0.3 percent from April, when output was up 0.8 percent. Retail sales of food, drinks and tobacco declined 0.7 percent and that of non-food products slid 0.6 percent. At the same time, automotive fuel in specialized stores fell 1.3 percent.

UK house prices stagnated in June, Halifax data shows

British house prices stagnated month-on-month during June, as economists polled by Reuters had expected, figures from Halifax showed on Monday. The mortgage lender revised up May's reading to show a 0.3% drop rather than a 0.4% drop. The data underlined the subdued state of Britain's housing market following an increase in tax on property transactions that took effect in April. House prices on Halifax's measure are now down slightly compared with their level at the end of last year.

Nifty : Holds An Uptrend; Crucial Support Seen at 25331; Resistance Band 25600-25670

NIFTY [N59901]25450.45,25489.80,25407.25,25461.30, 4604578816, 0.00%
Price Avg(E,50)



Nifty FMCG : Bullish Inverted Head And Shoulder Pattern Breakout;

NIFTYFMCG [N59915]54874.00,55691.75,54859.95,55652.85, 4604578816, 1.68%
Price Avg(E,50)

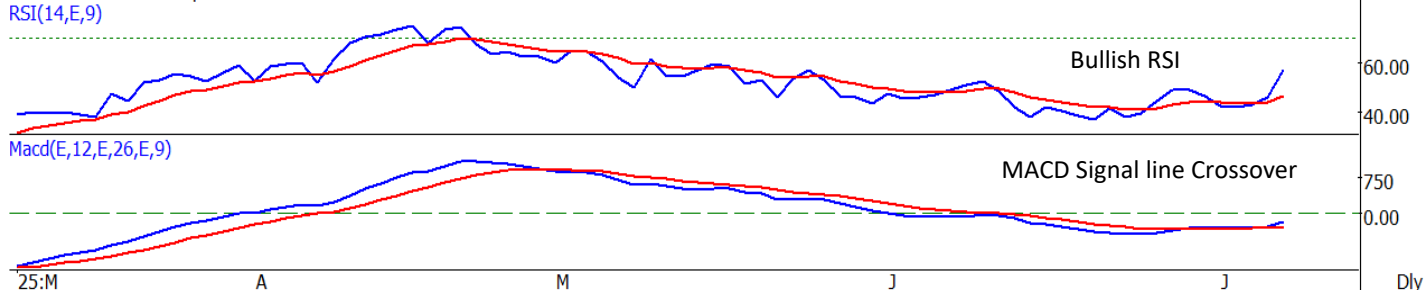
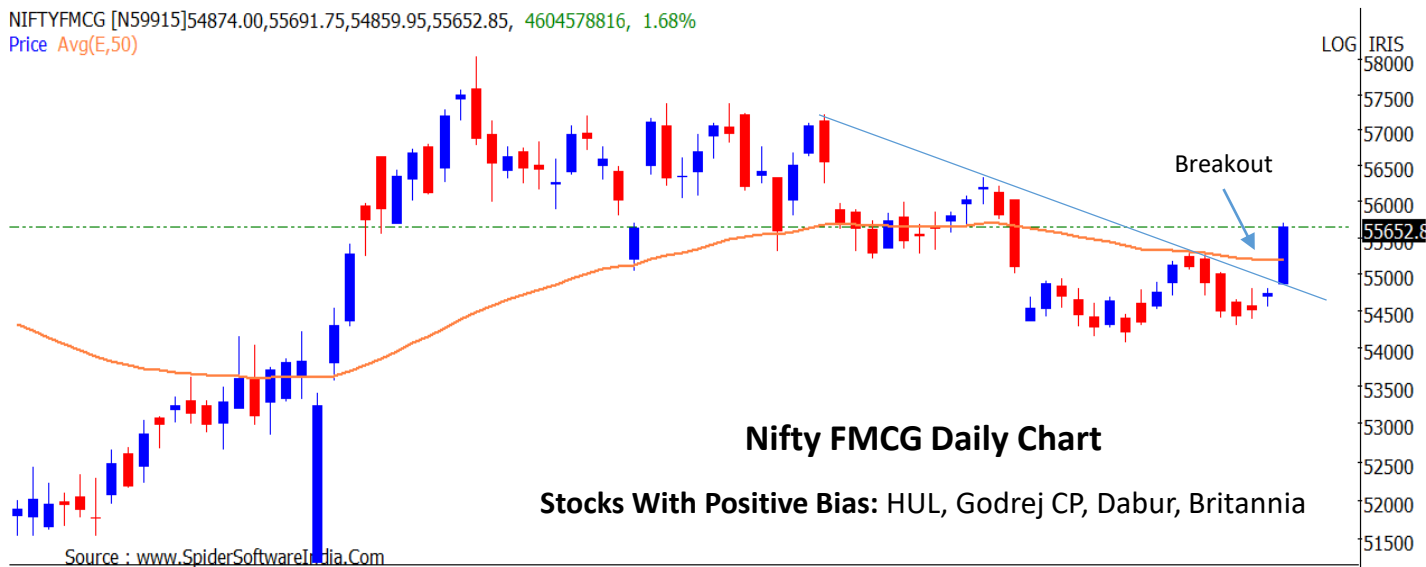
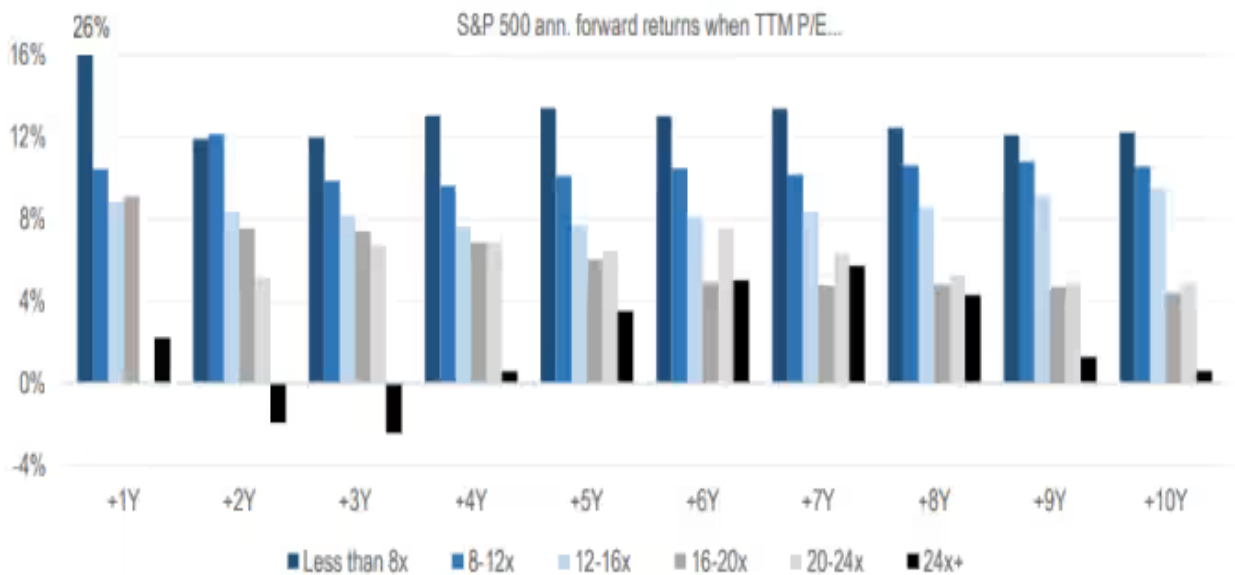


Chart With Interesting Observations

The Market's Shifting Sands

- The market's immediate trajectory hinges on a tug-of-war between powerful forces. On one side, a structural AI bull market provides underlying support for equities. However, a renewed wave of tariff anxieties, evident in the market's rocky start to the week, threatens to undermine stock performance once more.
- Adding to this precarious situation are elevated earnings per share multiples. The S&P 500, for instance, currently stands at a substantial 24.5 times earnings, a valuation, Historically preceded subpar market returns over the subsequent few years. The confluence of these factors suggests a period of significant uncertainty for investors.

S&P 500 annual Forward Returns when TTM P/E



Source: Bloomberg; HSL Prime Research

F&O Highlights

LONG BUILD UP WAS SEEN IN THE NIFTY FUTURES

Create Longs with the SL of 25400 Levels.

- It turned out to be a muted session for Nifty where, index consolidated in the narrow range of 80 points throughout the session. Nifty ended the session flat at 25461.
- Long Build-Up was seen in the Nifty Futures where Open Interest rose by 1.77% with Nifty rising by 0.01%.
- Short Build-Up was seen in the Bank Nifty Futures where Open Interest rose by 0.39% with Bank Nifty falling by 0.15%.
- Nifty Open Interest Put Call ratio rose to 0.95 levels from 0.93 levels.
- Amongst the Nifty options (10-Jul Expiry), Call writing is seen at 25600-25700 levels, indicating Nifty is likely to find strong resistance in the vicinity of 25600-25700 levels. On the lower side, an immediate support is placed in the vicinity of 25400-25500 levels where we have seen Put writing.
- Short build-up was seen by FII's in the Index Futures segment where they net sold worth 668 cr with their Open Interest going up by 5220 contracts.

| Index | Expected Trend | Prev. Close | Buy/Sell | Stop Loss | Target |
|----------------|----------------|-------------|-------------------------|--------------|--------------|
| NIFTY FUT | UP | 25538.90 | BUY AROUND 25500 | 25400 | 25650 |
| BANK NIFTY FUT | UP | 57187.80 | BUY AROUND 57100 | 56900 | 57400 |

| Nifty50 Snapshot | | | |
|---------------------|-----------|-----------|--------|
| | 07-Jul-25 | 04-Jul-25 | % Chg. |
| Nifty Spot | 25461.30 | 25461.00 | 0.00 |
| Nifty Futures | 25538.90 | 25540.10 | 0.00 |
| Premium/ (Discount) | 77.60 | 79.10 | N.A. |
| Open Interest (OI) | 1.61 | 1.58 | 1.77 |
| Nifty PCR | 0.95 | 0.93 | 1.88 |

| Bank Nifty Snapshot | | | |
|---------------------|-----------|-----------|--------|
| | 07-Jul-25 | 04-Jul-25 | % Chg. |
| Bank Nifty Spot | 56949.20 | 57031.90 | -0.15 |
| Bank Nifty Futures | 57187.80 | 57293.80 | -0.19 |
| Premium/ (Discount) | 238.60 | 261.90 | N.A. |
| Open Interest (OI) | 0.23 | 0.23 | 0.39 |
| Bank Nifty PCR | 1.00 | 1.01 | -1.69 |

| Nifty Options Highest OI (Weekly) | | | |
|-----------------------------------|---------------------------|--------------|---------------------------|
| CALL | | PUT | |
| Strike Price | Open Interest (Contracts) | Strike Price | Open Interest (Contracts) |
| 26000 | 139678 | 25000 | 93569 |

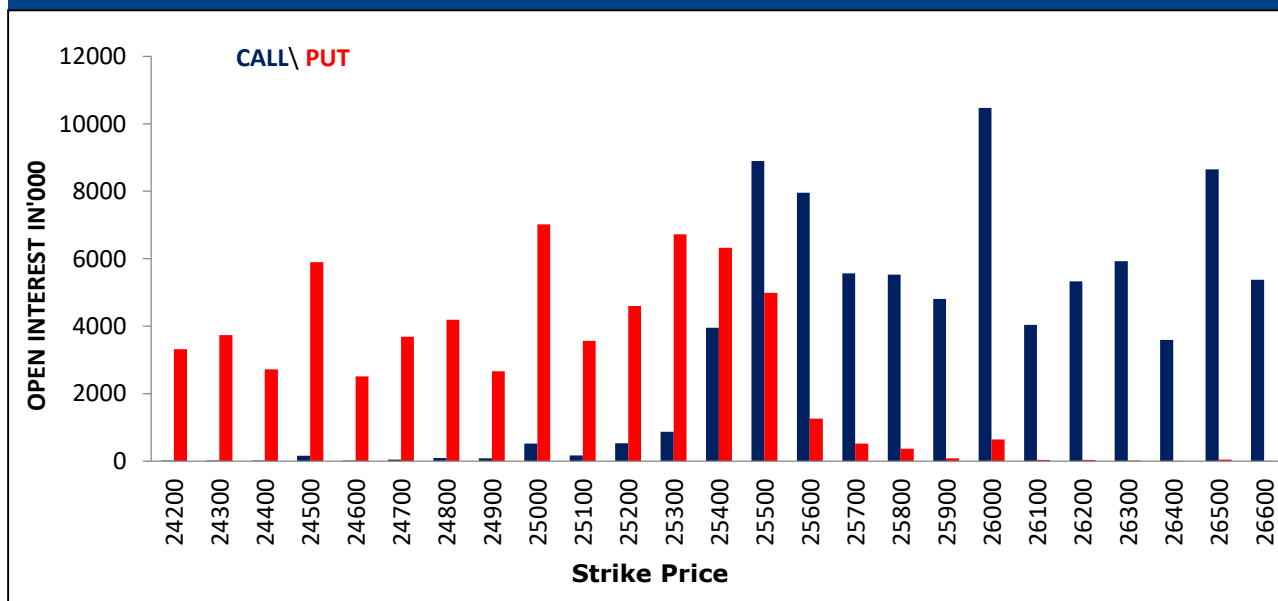
FII Activity On 07 July 2025

| | BUY | | SELL | | NET | OPEN INTEREST | |
|------------------------|----------------|---------------|----------------|---------------|--------------|----------------|---------------|
| | Contracts | Value (Rs Cr) | Contracts | Value (Rs Cr) | (Rs Cr) | Contracts | Value (Rs Cr) |
| Index Futures | 11073 | 2132 | 14489 | 2800 | -668 | 158879 | 30586 |
| Nifty Futures | 8837 | 1692 | 10982 | 2107 | -415 | 112897 | 21643 |
| Bank Nifty Fut. | 1639 | 328 | 2835 | 568 | -240 | 25396 | 5086 |
| Index Options | 3939139 | 753075 | 3959096 | 756859 | -3784 | 1328180 | 255098 |
| Nifty Options | 3841198 | 733752 | 3860765 | 737466 | -3713 | 1095419 | 209181 |
| Bank Nifty Opt. | 73411 | 14755 | 75116 | 15070 | -315 | 200562 | 39976 |
| Stock Futures | 186239 | 13233 | 191325 | 13426 | -193 | 5498628 | 388984 |
| Stock Options | 185078 | 14035 | 185181 | 14027 | 7 | 854568 | 60849 |

FII's Open Interest (Contracts)

| Date | Index Futures | Nifty Futures | Bank nifty Futures | Index Options | Nifty Options | Bank Nifty Options | Stock Futures | Stock Options |
|----------------------|---------------|---------------|--------------------|----------------|---------------|--------------------|----------------|---------------|
| 07-Jul-25 | 158879 | 112897 | 25396 | 1328180 | 1095419 | 200562 | 5498628 | 854568 |
| 04-Jul-25 | 153659 | 107986 | 24780 | 1280181 | 1048484 | 202801 | 5493236 | 844723 |
| Net Contracts | 5220 | 4911 | 616 | 47999 | 46935 | -2239 | 5392 | 9845 |

Nifty Weekly (10 - July) Option Open Interest Distribution



| Top Gainers OI Wise | | |
|---------------------|---------------|-----------|
| Company | Future OI (%) | Price (%) |
| KOTAKBANK | 8 | 1 |
| TATAPOWER | 7 | 0 |
| INDIANB | 6 | -1 |
| BPCL | 6 | 1 |
| PIDILITIND | 6 | 0 |

| Top Losers OI Wise | | |
|--------------------|---------------|-----------|
| Company | Future OI (%) | Price (%) |
| AARTIIND | -8 | -2 |
| OBEROIRLTY | -7 | -1 |
| DALBHARAT | -6 | -1 |
| CAMS | -5 | -2 |
| HINDZINC | -5 | -2 |

| Top Gainers Price Wise | | |
|------------------------|---------------|-----------|
| Company | Future OI (%) | Price (%) |
| GODREJPROP | 2 | 6 |
| DALBHARAT | -2 | 4 |
| HINDZINC | -3 | 3 |
| CYIENT | -2 | 3 |
| INDHOTEL | 3 | 3 |

| Top Losers Price Wise | | |
|-----------------------|---------------|-----------|
| Company | Future OI (%) | Price (%) |
| INFY | 0 | -4 |
| NCC | 1 | -4 |
| KAYNES | 3 | -4 |
| HDFCAMC | 3 | -3 |
| KPITTECH | -3 | -2 |

| Long Buildup | | |
|--------------|---------------|-----------|
| Company | Future OI (%) | Price (%) |
| IIFL | 6 | 3 |
| PGEL | 6 | 1 |
| TITAGARH | 6 | 1 |
| LTIM | 4 | 1 |
| GLENMARK | 3 | 2 |

| Short Buildup | | |
|---------------|---------------|-----------|
| Company | Future OI (%) | Price (%) |
| KFINTECH | 8 | -2 |
| TATAELXSI | 7 | -1 |
| BLUESTARCO | 6 | -1 |
| JUBLFOOD | 6 | -4 |
| MCX | 5 | -2 |

| Long Unwinding | | |
|----------------|---------------|-----------|
| Company | Future OI (%) | Price (%) |
| BSOFT | -5 | 0 |
| OIL | -3 | -1 |
| HINDZINC | -3 | -2 |
| BIOCON | -2 | -2 |
| TECHM | -2 | -2 |

| Short Covering | | |
|----------------|---------------|-----------|
| Company | Future OI (%) | Price (%) |
| 360ONE | -8 | 1 |
| NYKAA | -7 | 2 |
| DABUR | -6 | 4 |
| HINDUNILVR | -5 | 3 |
| AMBER | -4 | 1 |

| Securities In Ban For Trade – 08.07.2025 | |
|--|--------------|
| No. | Company Name |
| 1. | RBLBANK |

Economic Calendar

| Tuesday | Wednesday | Thursday | Friday | Monday |
|--|--|---|-----------------------------|---|
| 8 July | 9 July | 10 July | 11 July | 14 July |
| Japan: Balance of Payments (BoP) US: NFIB Small Business Optimism | China: CPI, PPI US: MBA Mortgage FOMC Minutes | Japan: PPI US: Initial & Conti. Claims | UK: GDP, IIP, Trade Balance | Japan: IIP India: Wholesale Price, CPI China: Trade Balance |

Open Derivatives Trading Calls

| NO | RECO DT | RECO | COMPANY NAME | BUY RANGE | CMP | SL | TARGET | UPSIDE % | VALID TILL |
|----|-----------|------|--|--------------|----------|----------|--------|----------|------------|
| 1 | 4-JUL-25 | BUY | BANK NIFTY JULY FUT | 57250-57000 | 57,171.0 | 56,900.0 | 57800 | 1.1 | 9-JUL-25 |
| 2 | 4-JUL-25 | BUY | NIFTY JULY FUT | 25530-25460 | 25,541.1 | 25,430.0 | 25730 | 0.7 | 9-JUL-25 |
| 3 | 7-JUL-25 | BUY | BEL JULY 420 PUT OPTION | 11.4 | 12.7 | 8.0 | 17.1 | 34.6 | 10-JUL-25 |
| 4 | 7-JUL-25 | BUY | MIDCAP NIFTY 31ST JULY 13450 CALL OPTION | 263.4 | 238.7 | 198.0 | 350 | 46.6 | 10-JUL-25 |
| 5 | 24-JUN-25 | BUY | SBI AUG FUT | 803-816 | 815.3 | 795.0 | 900 | 10.4 | 28-AUG-25 |
| 6 | 27-JUN-25 | BUY | ICICI BANK JULY FUT | 1459.60-1430 | 1,442.8 | 1,402.0 | 1520 | 5.4 | 11-JUL-25 |
| 7 | 2-JUL-25 | BUY | JSW STEEL JULY FUT | 1061-1034 | 1,044.0 | 1,023.0 | 1115 | 6.8 | 16-JUL-25 |
| 8 | 3-JUL-25 | BUY | ULTRATECH CEMENT JULY FUT | 12510-12203 | 12,391.0 | 12,072.0 | 13160 | 6.2 | 17-JUL-25 |

Open Short-Term MTF Calls

| NO. | RECO DT. | RECO | COMPANY NAME | BUY RANGE | CMP | Lower Band | SL | TARGET | UPSIDE % | VALID TILL |
|-----|-----------|------|-----------------------|-----------------|----------|------------|----------|----------|----------|------------|
| 1 | 20-JUN-25 | BUY | M&M | 3144.70-3174.70 | 3,160.2 | 3,084.7 | 3,033.7 | 3,309.7 | 4.7 | 11-JUL-25 |
| 2 | 26-JUN-25 | BUY | MAHARASHTRA SEAMLESS | 742-752 | 741.2 | 718.0 | 706.0 | 796.0 | 7.4 | 10-JUL-25 |
| 3 | 30-JUN-25 | BUY | DIVIS LAB | 6800-6840 | 6,888.5 | 6,689.0 | 6,596.0 | 7,105.0 | 3.1 | 21-JUL-25 |
| 4 | 1-JUL-25 | BUY | CARBORUNDUM UNIVERSAL | 992-978.45 | 983.7 | 949.0 | 931.0 | 1,048.0 | 6.5 | 15-JUL-25 |
| 5 | 1-JUL-25 | BUY | MAHARASHTRA BANK | 57.5-58.10 | 57.4 | 55.6 | 54.7 | 61.7 | 7.5 | 15-JUL-25 |
| 6 | 4-JUL-25 | BUY | DEVYANI INTERNATIONAL | 174-172 | 172.7 | 167.0 | 163.5 | 184.0 | 6.6 | 18-JUL-25 |
| 7 | 4-JUL-25 | BUY | CARE RATING | 1892-1910 | 1,828.3 | 1,825.0 | 1,796.0 | 2,030.0 | 11.0 | 18-JUL-25 |
| 8 | 4-JUL-25 | BUY | HONEYWELL AUTOMATION | 40760-41200 | 40,710.0 | 39,860.0 | 39,100.0 | 42,900.0 | 5.4 | 18-JUL-25 |

Open Positional MTF Calls

| NO. | RECO DT. | RECO | COMPANY NAME | BUY RANGE | CMP | SL | TARGET 1 | TARGET 2 | UPSIDE % | VALID TILL |
|-----|-----------|------|----------------------|---------------|---------|--------|----------|----------|----------|------------|
| 1 | 26-MAY-25 | BUY | CROMPTON GREAVES | 355.35-339 | 351.6 | 333.0 | 380.0 | 391.0 | 11 | 10-JUL-25 |
| 2 | 26-MAY-25 | BUY | CONSUMEETF | 118.81-115.80 | 121.9 | 114.0 | 124.5 | 127.0 | 4 | 24-AUG-25 |
| 3 | 2-JUN-25 | BUY | INDIAN BANK | 633.30-612 | 644.2 | 594.0 | 680.0 | 705.0 | 9 | 17-JUL-25 |
| 4 | 4-JUN-25 | BUY | MACROTECH DEVELOPERS | 1446.50-1340 | 1,377.3 | 1300.0 | 1621.0 | 1680.0 | 22 | 3-AUG-25 |
| 5 | 9-JUN-25 | BUY | JSW INFRA | 310-287 | 305.2 | 279.0 | 335.0 | 350.0 | 15 | 24-JUL-25 |
| 6 | 9-JUN-25 | BUY | AUTOIETF | 24.45-23.79 | 24.5 | 23.5 | 25.1 | 25.7 | 5 | 7-SEP-25 |
| 7 | 10-JUN-25 | BUY | ITBEES | 41.90-42.10 | 42.3 | 40.2 | 44.0 | 46.0 | 9 | 8-SEP-25 |
| 8 | 11-JUN-25 | BUY | VRL LOGISTICS | 572-584 | 601.7 | 529.0 | 620.0 | 650.0 | 8 | 26-JUL-25 |
| 9 | 25-JUN-25 | BUY | JUBILANT FOOD | 716-708.50 | 684.1 | 665.0 | 765.0 | 815.0 | 19 | 9-AUG-25 |
| 10 | 26-JUN-25 | BUY | PCBL | 423-415.05 | 402.3 | 383.0 | 457.0 | 485.0 | 21 | 25-AUG-25 |

*= 1st Target Achieved

NSE 200 SUPPORT & RESISTANCE

| SYMBOL | CLOSE | R2 | R1 | PIVOT | S1 | S2 | 5 DMA | 20 DMA | % Delivery | Trend |
|------------|---------|---------|---------|---------|---------|---------|---------|---------|------------|---------|
| ABB | 5844.0 | 5896.0 | 5870.0 | 5836.0 | 5810.0 | 5776.0 | 5886.6 | 5984.2 | 41.5 | Bearish |
| ABCAPITAL | 276.3 | 281.5 | 278.9 | 275.1 | 272.5 | 268.8 | 275.7 | 262.9 | 56.1 | Bullish |
| ABFRL | 78.1 | 79.4 | 78.8 | 78.2 | 77.6 | 77.1 | 77.1 | 75.3 | 39.0 | Bullish |
| ACC | 1964.5 | 1982.5 | 1973.5 | 1958.0 | 1949.0 | 1933.5 | 1949.4 | 1886.9 | 57.3 | Bullish |
| AMBUJACEM | 592.0 | 602.9 | 597.5 | 591.4 | 585.9 | 579.8 | 590.2 | 562.2 | 59.4 | Bullish |
| ADANIPOWER | 597.2 | 613.2 | 605.2 | 592.0 | 583.9 | 570.7 | 590.5 | 570.1 | 41.8 | Bullish |
| ADANIENSOL | 883.4 | 897.2 | 890.3 | 880.7 | 873.8 | 864.2 | 877.4 | 866.4 | 56.9 | Bullish |
| ADANIGREEN | 991.1 | 1003.0 | 997.0 | 992.9 | 986.9 | 982.8 | 1006.2 | 996.3 | 33.0 | Bearish |
| ADANIENT | 2576.1 | 2617.9 | 2597.0 | 2584.5 | 2563.6 | 2551.1 | 2607.7 | 2550.1 | 31.2 | Bullish |
| ADANIPORTS | 1435.6 | 1450.9 | 1443.3 | 1430.1 | 1422.5 | 1409.3 | 1436.4 | 1413.6 | 48.1 | Bullish |
| ASHOKLEY | 249.8 | 252.1 | 250.9 | 249.3 | 248.2 | 246.6 | 250.7 | 242.4 | 59.7 | Bullish |
| ALKEM | 4877.3 | 4938.2 | 4907.7 | 4875.4 | 4844.9 | 4812.6 | 4861.9 | 4850.0 | 73.5 | Bullish |
| APLAPOLLO | 1734.1 | 1760.0 | 1747.1 | 1731.0 | 1718.1 | 1702.0 | 1736.7 | 1792.2 | 54.4 | Bearish |
| APOLLOHOSP | 7616.0 | 7682.3 | 7649.2 | 7592.3 | 7559.2 | 7502.3 | 7534.3 | 7167.2 | 72.9 | Bullish |
| ASIANPAINT | 2442.8 | 2487.1 | 2464.9 | 2443.0 | 2420.8 | 2398.9 | 2417.4 | 2305.1 | 49.8 | Bullish |
| APOLLTYRE | 460.4 | 467.9 | 464.1 | 459.9 | 456.1 | 451.9 | 459.3 | 452.2 | 46.5 | Bullish |
| AUROPHARMA | 1185.1 | 1201.7 | 1193.4 | 1184.7 | 1176.4 | 1167.7 | 1164.6 | 1135.2 | 47.0 | Bullish |
| ASTRAL | 1488.7 | 1503.6 | 1496.1 | 1485.1 | 1477.6 | 1466.6 | 1490.5 | 1516.4 | 62.1 | Bearish |
| ATGL | 656.5 | 668.8 | 662.7 | 658.8 | 652.7 | 648.8 | 662.1 | 657.4 | 36.9 | Bearish |
| AUBANK | 813.9 | 830.6 | 822.2 | 816.1 | 807.8 | 801.7 | 820.4 | 798.7 | 63.3 | Bullish |
| AXISBANK | 1175.1 | 1183.4 | 1179.3 | 1173.4 | 1169.3 | 1163.4 | 1174.5 | 1207.6 | 77.3 | Bearish |
| BAJFINANCE | 924.7 | 935.2 | 929.9 | 924.0 | 918.7 | 912.8 | 924.0 | 928.1 | 57.8 | Bearish |
| BAJAJHFL | 121.0 | 123.0 | 122.0 | 121.4 | 120.3 | 119.7 | 121.5 | 121.5 | 58.5 | Bearish |
| BANDHANBNK | 177.5 | 181.8 | 179.6 | 178.3 | 176.2 | 174.9 | 183.3 | 181.4 | 37.6 | Bearish |
| BDL | 1943.3 | 1993.4 | 1968.3 | 1947.7 | 1922.6 | 1902.0 | 1968.3 | 1910.8 | 23.5 | Bullish |
| BHARTIARTL | 2033.9 | 2052.2 | 2043.1 | 2026.8 | 2017.7 | 2001.4 | 2024.6 | 1940.4 | 78.6 | Bullish |
| BHARTIHEXA | 1839.8 | 1924.6 | 1882.2 | 1857.6 | 1815.2 | 1790.6 | 1924.9 | 1841.5 | 42.9 | Bearish |
| BEL | 417.1 | 431.5 | 424.3 | 420.2 | 413.0 | 408.9 | 426.0 | 410.3 | 53.7 | Bullish |
| BHEL | 256.4 | 263.1 | 259.7 | 257.5 | 254.2 | 252.0 | 259.9 | 257.5 | 35.6 | Bearish |
| BHARATFORG | 1306.2 | 1325.4 | 1315.8 | 1304.4 | 1294.8 | 1283.4 | 1303.0 | 1302.4 | 51.7 | Bullish |
| BIOCON | 372.1 | 385.7 | 378.9 | 375.2 | 368.4 | 364.6 | 371.5 | 356.3 | 53.6 | Bullish |
| BAJAJ-AUTO | 8463.5 | 8530.5 | 8497.0 | 8450.5 | 8417.0 | 8370.5 | 8406.9 | 8453.4 | 50.7 | Bearish |
| BAJAJFINSV | 2006.4 | 2029.3 | 2017.9 | 2005.4 | 1994.0 | 1981.5 | 2008.6 | 2011.6 | 56.5 | Bearish |
| BAJAJHLDNG | 14288.0 | 14491.3 | 14389.7 | 14247.3 | 14145.7 | 14003.3 | 14291.4 | 14012.1 | 41.5 | Bullish |
| BANKBARODA | 241.1 | 247.0 | 244.0 | 242.1 | 239.1 | 237.2 | 243.0 | 240.3 | 52.3 | Bullish |
| BANKINDIA | 117.7 | 119.8 | 118.8 | 118.1 | 117.0 | 116.3 | 118.9 | 118.8 | 43.2 | Bearish |
| MAHABANK | 57.4 | 58.2 | 57.8 | 57.5 | 57.1 | 56.8 | 57.5 | 55.4 | 39.0 | Bullish |
| BOSCHLTD | 36045.0 | 36885.0 | 36465.0 | 35920.0 | 35500.0 | 34955.0 | 34228.0 | 32561.0 | 37.3 | Bullish |
| BPCL | 350.5 | 356.6 | 353.6 | 348.5 | 345.5 | 340.4 | 338.4 | 324.8 | 47.2 | Bullish |
| BRITANNIA | 5884.0 | 5968.7 | 5926.3 | 5857.2 | 5814.8 | 5745.7 | 5796.7 | 5682.7 | 64.7 | Bullish |
| BSE | 2636.2 | 2724.9 | 2680.6 | 2635.6 | 2591.3 | 2546.3 | 2723.8 | 2747.5 | 21.7 | Bearish |
| CANBK | 114.3 | 116.4 | 115.4 | 114.7 | 113.7 | 113.0 | 114.5 | 112.0 | 45.5 | Bullish |
| CONCOR | 597.2 | 609.0 | 603.1 | 596.6 | 590.7 | 584.2 | 597.0 | 603.6 | 54.8 | Bearish |
| CGPOWER | 680.5 | 690.8 | 685.6 | 676.8 | 671.6 | 662.8 | 674.7 | 679.7 | 46.2 | Bearish |
| CHOLAFIN | 1514.3 | 1546.3 | 1530.3 | 1519.2 | 1503.2 | 1492.1 | 1544.5 | 1580.7 | 77.5 | Bearish |
| CIPLA | 1510.5 | 1524.8 | 1517.6 | 1512.1 | 1504.9 | 1499.4 | 1509.2 | 1504.7 | 62.3 | Bullish |
| COLPAL | 2465.4 | 2516.9 | 2491.2 | 2466.1 | 2440.4 | 2415.3 | 2440.3 | 2412.3 | 38.5 | Bullish |
| COALINDIA | 384.3 | 387.4 | 385.8 | 384.9 | 383.3 | 382.4 | 386.7 | 391.3 | 56.7 | Bearish |
| COCHINSHIP | 2051.7 | 2095.9 | 2073.8 | 2051.9 | 2029.8 | 2007.9 | 2039.0 | 2122.9 | 23.6 | Bearish |
| COFORGE | 1941.7 | 1979.0 | 1960.4 | 1948.5 | 1929.9 | 1918.0 | 1935.8 | 1865.9 | 53.6 | Bullish |

NSE 200 SUPPORT & RESISTANCE

| SYMBOL | CLOSE | R2 | R1 | PIVOT | S1 | S2 | 5 DMA | 20 DMA | % Delivery | Trend |
|------------|---------|---------|---------|---------|---------|---------|---------|---------|------------|---------|
| DABUR | 512.8 | 530.5 | 521.6 | 508.8 | 500.0 | 487.2 | 493.9 | 480.3 | 23.0 | Bullish |
| DIVISLAB | 6888.5 | 6963.5 | 6926.0 | 6893.5 | 6856.0 | 6823.5 | 6877.4 | 6695.2 | 46.0 | Bullish |
| DIXON | 15433.0 | 15956.3 | 15694.7 | 15406.3 | 15144.7 | 14856.3 | 15117.6 | 14608.8 | 34.5 | Bullish |
| DLF | 832.5 | 845.1 | 838.8 | 832.9 | 826.6 | 820.7 | 834.7 | 847.3 | 36.2 | Bearish |
| DMART | 4236.3 | 4321.4 | 4278.8 | 4254.5 | 4211.9 | 4187.6 | 4338.1 | 4235.8 | 38.2 | Bullish |
| DRREDDY | 1310.5 | 1322.6 | 1316.6 | 1307.3 | 1301.3 | 1292.0 | 1291.4 | 1320.7 | 52.2 | Bearish |
| EICHERMOT | 5682.5 | 5744.2 | 5713.3 | 5669.2 | 5638.3 | 5594.2 | 5693.1 | 5531.6 | 56.2 | Bullish |
| ESCORTS | 3341.8 | 3402.1 | 3372.0 | 3325.0 | 3294.9 | 3247.9 | 3341.5 | 3274.6 | 49.6 | Bullish |
| ETERNAL | 258.6 | 264.1 | 261.3 | 258.8 | 256.0 | 253.4 | 260.3 | 256.3 | 53.8 | Bullish |
| EXIDEIND | 386.2 | 390.2 | 388.2 | 384.7 | 382.7 | 379.2 | 384.2 | 386.2 | 55.5 | Bearish |
| FEDERALBNK | 215.1 | 218.1 | 216.6 | 215.7 | 214.2 | 213.3 | 216.8 | 210.1 | 60.0 | Bullish |
| GAIL | 193.2 | 196.3 | 194.7 | 193.7 | 192.1 | 191.1 | 191.9 | 189.6 | 59.5 | Bullish |
| GODREJCP | 1268.4 | 1301.9 | 1285.1 | 1255.2 | 1238.4 | 1208.5 | 1195.1 | 1191.9 | 25.1 | Bullish |
| GMRAIRPORT | 90.1 | 91.3 | 90.7 | 90.0 | 89.4 | 88.7 | 88.6 | 84.4 | 56.7 | Bullish |
| GLENMARK | 1860.1 | 1908.5 | 1884.3 | 1855.2 | 1831.0 | 1801.9 | 1799.7 | 1705.7 | 37.2 | Bullish |
| GODREJPROP | 2299.0 | 2344.3 | 2321.7 | 2296.8 | 2274.2 | 2249.3 | 2294.8 | 2381.7 | 55.0 | Bearish |
| GRASIM | 2779.1 | 2836.2 | 2807.7 | 2791.3 | 2762.8 | 2746.4 | 2820.1 | 2763.3 | 65.8 | Bullish |
| HAVELLS | 1537.6 | 1619.5 | 1578.5 | 1552.6 | 1511.6 | 1485.7 | 1557.2 | 1555.0 | 51.0 | Bearish |
| HCLTECH | 1710.4 | 1735.3 | 1722.8 | 1713.1 | 1700.6 | 1690.9 | 1717.0 | 1714.1 | 60.6 | Bearish |
| HDFCAMC | 4999.0 | 5163.7 | 5081.3 | 5032.7 | 4950.3 | 4901.7 | 5059.3 | 5039.2 | 65.2 | Bearish |
| HDFCBANK | 1987.4 | 2004.5 | 1995.9 | 1989.9 | 1981.3 | 1975.3 | 1992.4 | 1968.3 | 63.4 | Bullish |
| HDFCLIFE | 789.5 | 799.5 | 794.5 | 787.8 | 782.8 | 776.1 | 792.0 | 780.3 | 67.6 | Bullish |
| HEROMOTOCO | 4307.0 | 4386.5 | 4346.7 | 4319.9 | 4280.1 | 4253.3 | 4286.5 | 4320.8 | 56.8 | Bearish |
| HAL | 5012.6 | 5099.0 | 5055.8 | 5005.4 | 4962.2 | 4911.8 | 4949.5 | 4957.7 | 40.1 | Bearish |
| HINDALCO | 692.1 | 704.6 | 698.3 | 693.2 | 687.0 | 681.9 | 695.4 | 669.7 | 60.6 | Bullish |
| HINDPETRO | 447.9 | 462.1 | 455.0 | 448.1 | 441.0 | 434.2 | 441.2 | 413.7 | 45.2 | Bullish |
| HUDCO | 227.3 | 232.6 | 230.0 | 228.4 | 225.8 | 224.2 | 232.8 | 232.4 | 45.0 | Bearish |
| HINDUNILVR | 2410.4 | 2463.7 | 2437.1 | 2389.0 | 2362.4 | 2314.3 | 2333.1 | 2317.1 | 51.6 | Bullish |
| HYUNDAI | 2101.2 | 2140.3 | 2120.8 | 2089.4 | 2069.9 | 2038.5 | 2124.3 | 2043.4 | 45.0 | Bullish |
| HINDZINC | 437.5 | 449.1 | 443.3 | 439.8 | 434.0 | 430.4 | 445.1 | 465.8 | 52.9 | Bearish |
| ICICIBANK | 1435.7 | 1446.7 | 1441.2 | 1435.4 | 1429.9 | 1424.1 | 1432.8 | 1428.9 | 72.0 | Bullish |
| ICICIGI | 2025.5 | 2067.7 | 2046.6 | 2030.9 | 2009.8 | 1994.1 | 2040.6 | 1985.1 | 65.7 | Bullish |
| IDEA | 7.3 | 7.5 | 7.4 | 7.3 | 7.2 | 7.2 | 7.4 | 7.0 | 23.9 | Bullish |
| IDFCFIRSTB | 77.7 | 78.8 | 78.3 | 77.7 | 77.2 | 76.7 | 77.5 | 72.8 | 58.2 | Bullish |
| IGL | 226.8 | 230.7 | 228.8 | 226.6 | 224.7 | 222.5 | 221.8 | 211.6 | 25.7 | Bullish |
| INDHOTEL | 737.2 | 753.6 | 745.4 | 740.5 | 732.2 | 727.3 | 750.2 | 759.0 | 75.4 | Bearish |
| INDUSINDBK | 854.5 | 877.3 | 865.9 | 855.5 | 844.1 | 833.8 | 862.0 | 843.2 | 25.4 | Bullish |
| INDIANB | 644.2 | 662.8 | 653.5 | 648.2 | 638.9 | 633.6 | 648.2 | 631.9 | 57.7 | Bullish |
| INDIGO | 5748.0 | 5818.0 | 5783.0 | 5757.0 | 5722.0 | 5696.0 | 5837.6 | 5599.0 | 69.7 | Bullish |
| INDUSTOWER | 408.4 | 428.0 | 418.2 | 412.9 | 403.1 | 397.7 | 420.5 | 404.9 | 45.2 | Bullish |
| INFY | 1627.0 | 1652.3 | 1639.7 | 1631.3 | 1618.7 | 1610.3 | 1620.7 | 1614.3 | 63.7 | Bullish |
| NAUKRI | 1431.1 | 1526.3 | 1478.7 | 1441.4 | 1393.8 | 1356.5 | 1452.8 | 1482.5 | 45.8 | Bearish |
| IOC | 153.8 | 156.6 | 155.2 | 153.5 | 152.1 | 150.4 | 149.7 | 144.3 | 45.2 | Bullish |
| ICICIPRULI | 666.1 | 678.6 | 672.3 | 661.6 | 655.4 | 644.7 | 655.3 | 641.8 | 45.0 | Bullish |
| IRB | 49.1 | 50.3 | 49.7 | 49.3 | 48.7 | 48.3 | 49.5 | 49.8 | 46.2 | Bearish |
| IRCTC | 784.4 | 793.5 | 788.9 | 782.0 | 777.4 | 770.5 | 779.0 | 771.9 | 54.3 | Bullish |
| IREDA | 167.1 | 169.1 | 168.1 | 166.9 | 165.9 | 164.7 | 168.0 | 169.2 | 35.3 | Bearish |
| IRFC | 138.5 | 140.7 | 139.6 | 138.9 | 137.9 | 137.2 | 139.9 | 139.3 | 37.5 | Bearish |
| ITC | 416.2 | 420.3 | 418.2 | 415.1 | 413.0 | 409.9 | 414.0 | 417.2 | 60.2 | Bearish |
| JIOFIN | 328.1 | 333.6 | 330.8 | 326.9 | 324.2 | 320.3 | 326.9 | 307.0 | 36.5 | Bullish |

NSE 200 SUPPORT & RESISTANCE

| SYMBOL | CLOSE | R2 | R1 | PIVOT | S1 | S2 | 5 DMA | 20 DMA | % Delivery | Trend |
|------------|----------|----------|----------|----------|----------|----------|----------|----------|------------|---------|
| JINDALSTEL | 953.5 | 970.9 | 962.2 | 952.1 | 943.4 | 933.3 | 956.6 | 932.8 | 22.7 | Bullish |
| JSWSTEEL | 1042.6 | 1050.7 | 1046.6 | 1041.0 | 1036.9 | 1031.3 | 1043.9 | 1015.7 | 56.6 | Bullish |
| JSWENERGY | 509.7 | 530.2 | 519.9 | 514.0 | 503.7 | 497.8 | 515.4 | 512.2 | 32.8 | Bearish |
| JUBLFOOD | 684.1 | 726.8 | 705.5 | 693.4 | 672.0 | 659.9 | 703.9 | 695.3 | 37.6 | Bearish |
| KALYANKJIL | 584.1 | 604.8 | 594.4 | 582.6 | 572.2 | 560.4 | 581.7 | 542.2 | 19.4 | Bullish |
| CUMMINSIND | 3436.1 | 3515.2 | 3475.6 | 3403.0 | 3363.4 | 3290.8 | 3359.5 | 3329.8 | 60.4 | Bullish |
| KOTAKBANK | 2149.8 | 2177.8 | 2163.8 | 2142.8 | 2128.8 | 2107.8 | 2151.8 | 2159.8 | 74.3 | Bearish |
| KPITTECH | 1268.8 | 1280.2 | 1274.5 | 1265.8 | 1260.1 | 1251.4 | 1256.6 | 1327.9 | 56.8 | Bearish |
| LICHSGFIN | 607.8 | 614.6 | 611.2 | 608.6 | 605.2 | 602.7 | 609.7 | 606.8 | 49.5 | Bullish |
| LICI | 943.7 | 951.9 | 947.8 | 942.9 | 938.8 | 934.0 | 951.9 | 948.7 | 52.2 | Bearish |
| LODHA | 1377.3 | 1399.0 | 1388.1 | 1373.6 | 1362.7 | 1348.2 | 1380.9 | 1433.3 | 47.9 | Bearish |
| LUPIN | 1978.6 | 2003.9 | 1991.3 | 1978.1 | 1965.5 | 1952.3 | 1968.7 | 1964.1 | 47.0 | Bullish |
| LT | 3581.4 | 3623.5 | 3602.4 | 3588.8 | 3567.7 | 3554.1 | 3604.5 | 3626.5 | 62.4 | Bearish |
| LTF | 207.8 | 214.1 | 210.9 | 208.0 | 204.9 | 201.9 | 206.2 | 197.4 | 40.9 | Bullish |
| LTIM | 5350.0 | 5413.0 | 5381.5 | 5343.5 | 5312.0 | 5274.0 | 5319.8 | 5373.2 | 50.4 | Bearish |
| MANKIND | 2410.4 | 2485.7 | 2448.0 | 2428.0 | 2390.3 | 2370.3 | 2376.7 | 2348.9 | 61.3 | Bullish |
| MFSL | 1568.5 | 1610.2 | 1589.3 | 1577.1 | 1556.2 | 1544.0 | 1615.0 | 1593.2 | 64.5 | Bearish |
| MAXHEALTH | 1299.6 | 1313.6 | 1306.6 | 1298.0 | 1291.0 | 1282.4 | 1292.7 | 1237.5 | 65.3 | Bullish |
| MAZADOCK | 3276.8 | 3352.7 | 3314.8 | 3287.9 | 3250.0 | 3223.1 | 3289.3 | 3256.8 | 22.4 | Bullish |
| M&M | 3160.2 | 3182.7 | 3171.4 | 3161.8 | 3150.5 | 3140.9 | 3167.7 | 3123.3 | 65.7 | Bullish |
| M&MFIN | 268.1 | 271.7 | 269.9 | 267.4 | 265.6 | 263.0 | 266.0 | 268.9 | 59.6 | Bearish |
| MOTILALOFS | 930.1 | 972.2 | 951.1 | 928.0 | 906.9 | 883.8 | 900.3 | 856.4 | 27.5 | Bullish |
| MOTHERSON | 155.2 | 157.7 | 156.5 | 154.8 | 153.5 | 151.9 | 153.7 | 153.2 | 59.1 | Bullish |
| MPHASIS | 2874.6 | 2982.0 | 2928.3 | 2896.7 | 2843.0 | 2811.4 | 2890.3 | 2755.0 | 54.1 | Bullish |
| MARICO | 729.4 | 743.6 | 736.5 | 731.9 | 724.8 | 720.2 | 720.2 | 705.9 | 54.1 | Bullish |
| MRF | 143135.0 | 145791.7 | 144463.3 | 143331.7 | 142003.3 | 140871.7 | 143946.0 | 139551.5 | 38.1 | Bullish |
| MARUTI | 12520.0 | 12752.7 | 12636.3 | 12553.7 | 12437.3 | 12354.7 | 12596.4 | 12602.8 | 52.8 | Bearish |
| MUTHOOTFIN | 2660.6 | 2711.8 | 2686.2 | 2666.0 | 2640.4 | 2620.2 | 2645.2 | 2607.4 | 53.6 | Bullish |
| NATIONALUM | 188.6 | 193.7 | 191.1 | 189.4 | 186.8 | 185.1 | 191.1 | 188.9 | 43.4 | Bearish |
| NESTLEIND | 2422.1 | 2450.0 | 2436.1 | 2412.0 | 2398.1 | 2374.0 | 2400.3 | 2393.6 | 52.4 | Bullish |
| NHPC | 84.4 | 85.7 | 85.1 | 84.7 | 84.1 | 83.7 | 84.9 | 85.4 | 47.8 | Bearish |
| NMDC | 68.3 | 69.4 | 68.9 | 68.4 | 67.8 | 67.4 | 68.4 | 69.6 | 41.2 | Bearish |
| NTPC | 337.5 | 342.0 | 339.7 | 336.7 | 334.5 | 331.5 | 334.8 | 334.4 | 59.2 | Bullish |
| NTPCGREEN | 106.9 | 108.4 | 107.7 | 106.8 | 106.0 | 105.1 | 106.6 | 107.5 | 56.5 | Bearish |
| NYKAA | 201.5 | 205.1 | 203.3 | 201.3 | 199.5 | 197.5 | 204.1 | 200.8 | 47.5 | Bullish |
| OBEROIRLTY | 1844.3 | 1892.2 | 1868.3 | 1852.9 | 1829.0 | 1813.6 | 1879.2 | 1912.8 | 55.5 | Bearish |
| OFSS | 9005.0 | 9139.7 | 9072.3 | 9032.2 | 8964.8 | 8924.7 | 9008.8 | 9259.6 | 41.2 | Bearish |
| OIL | 440.6 | 449.6 | 445.1 | 442.6 | 438.1 | 435.5 | 441.9 | 454.6 | 51.3 | Bearish |
| OLAELEC | 41.5 | 42.5 | 42.0 | 41.5 | 41.0 | 40.6 | 41.4 | 44.5 | 32.9 | Bearish |
| ONGC | 241.5 | 247.3 | 244.4 | 242.6 | 239.7 | 237.9 | 243.1 | 246.9 | 62.7 | Bearish |
| PAGEIND | 48910.0 | 49450.0 | 49180.0 | 48810.0 | 48540.0 | 48170.0 | 48292.0 | 47061.0 | 61.8 | Bullish |
| PATANJALI | 1661.1 | 1699.2 | 1680.1 | 1651.0 | 1631.9 | 1602.8 | 1650.1 | 1653.2 | 26.4 | Bearish |
| PAYTM | 920.8 | 938.1 | 929.4 | 923.3 | 914.6 | 908.5 | 926.8 | 907.1 | 37.9 | Bullish |
| PRESTIGE | 1630.5 | 1655.9 | 1643.2 | 1622.3 | 1609.6 | 1588.7 | 1616.6 | 1670.4 | 46.5 | Bearish |
| PHOENIXLTD | 1549.5 | 1577.6 | 1563.5 | 1547.0 | 1532.9 | 1516.4 | 1529.1 | 1587.2 | 72.6 | Bearish |
| PIIND | 4162.1 | 4256.1 | 4209.1 | 4173.0 | 4126.0 | 4089.9 | 4188.6 | 4117.3 | 60.7 | Bullish |
| PIDILITIND | 3072.4 | 3133.9 | 3103.2 | 3064.7 | 3034.0 | 2995.5 | 3077.9 | 3029.2 | 58.1 | Bullish |
| PETRONET | 307.5 | 314.0 | 310.8 | 305.1 | 301.9 | 296.2 | 302.0 | 300.5 | 51.6 | Bullish |
| PNB | 112.5 | 114.1 | 113.3 | 112.0 | 111.2 | 109.8 | 112.1 | 108.0 | 46.9 | Bullish |
| POLICYBZR | 1824.8 | 1863.1 | 1844.0 | 1810.8 | 1791.7 | 1758.5 | 1816.4 | 1860.6 | 49.0 | Bearish |

NSE 200 SUPPORT & RESISTANCE

| SYMBOL | CLOSE | R2 | R1 | PIVOT | S1 | S2 | 5 DMA | 20 DMA | % Delivery | Trend |
|------------|---------|---------|---------|---------|---------|---------|---------|---------|------------|---------|
| POLYCAB | 6700.0 | 6816.0 | 6758.0 | 6681.5 | 6623.5 | 6547.0 | 6731.4 | 6329.1 | 46.4 | Bullish |
| PFC | 411.5 | 416.9 | 414.2 | 412.0 | 409.3 | 407.0 | 416.5 | 413.9 | 50.2 | Bearish |
| PREMIERENE | 1042.0 | 1070.3 | 1056.1 | 1043.6 | 1029.4 | 1016.9 | 1053.3 | 1034.4 | 39.4 | Bullish |
| PERSISTENT | 5840.5 | 5936.8 | 5888.7 | 5846.8 | 5798.7 | 5756.8 | 5948.0 | 5997.6 | 61.9 | Bearish |
| POWERGRID | 295.9 | 298.5 | 297.2 | 295.4 | 294.1 | 292.2 | 295.2 | 292.5 | 63.5 | Bullish |
| RECLTD | 391.6 | 397.7 | 394.6 | 392.5 | 389.4 | 387.3 | 394.9 | 400.0 | 56.5 | Bearish |
| RELIANCE | 1541.5 | 1556.9 | 1549.2 | 1537.1 | 1529.4 | 1517.3 | 1526.8 | 1473.8 | 65.9 | Bullish |
| RVNL | 389.5 | 398.0 | 393.7 | 391.3 | 387.0 | 384.6 | 392.0 | 399.8 | 27.1 | Bearish |
| SAIL | 133.5 | 135.4 | 134.4 | 133.4 | 132.4 | 131.4 | 135.1 | 131.0 | 23.8 | Bullish |
| SBICARD | 909.0 | 925.0 | 917.0 | 911.8 | 903.8 | 898.7 | 915.0 | 963.2 | 57.0 | Bearish |
| SBILIFE | 1808.3 | 1823.7 | 1816.0 | 1804.1 | 1796.4 | 1784.5 | 1827.5 | 1814.7 | 64.1 | Bearish |
| SBIN | 806.9 | 815.7 | 811.3 | 808.2 | 803.8 | 800.7 | 811.8 | 802.8 | 56.0 | Bullish |
| SHRIRAMFIN | 671.3 | 684.4 | 677.9 | 673.4 | 666.9 | 662.4 | 679.2 | 678.1 | 52.0 | Bearish |
| SUPREMEIND | 4273.6 | 4322.3 | 4297.9 | 4268.6 | 4244.2 | 4214.9 | 4295.7 | 4403.4 | 59.2 | Bearish |
| SIEMENS | 3278.2 | 3336.1 | 3307.1 | 3278.6 | 3249.6 | 3221.1 | 3298.6 | 3259.3 | 49.4 | Bullish |
| SJVN | 98.6 | 100.9 | 99.7 | 98.8 | 97.6 | 96.7 | 98.9 | 99.0 | 32.0 | Bearish |
| SOLARINDS | 16717.0 | 17117.7 | 16917.3 | 16743.7 | 16543.3 | 16369.7 | 16906.0 | 17008.4 | 56.3 | Bearish |
| SONACOMS | 468.3 | 486.0 | 477.2 | 471.6 | 462.8 | 457.2 | 475.5 | 486.5 | 50.9 | Bearish |
| SHREECEM | 31105.0 | 31665.0 | 31385.0 | 31105.0 | 30825.0 | 30545.0 | 31333.0 | 30042.3 | 56.1 | Bullish |
| SRF | 3239.4 | 3275.0 | 3257.2 | 3229.1 | 3211.3 | 3183.2 | 3231.5 | 3128.5 | 62.2 | Bullish |
| SUZLON | 65.9 | 67.3 | 66.6 | 65.9 | 65.1 | 64.4 | 65.7 | 65.3 | 37.5 | Bullish |
| SUNPHARMA | 1679.9 | 1694.5 | 1687.2 | 1675.1 | 1667.8 | 1655.7 | 1676.1 | 1672.9 | 69.4 | Bullish |
| SWIGGY | 376.7 | 392.2 | 384.4 | 379.7 | 372.0 | 367.3 | 384.2 | 379.4 | 39.3 | Bearish |
| TATASTEEL | 162.4 | 165.2 | 163.8 | 161.9 | 160.5 | 158.6 | 163.5 | 157.1 | 46.2 | Bullish |
| TATACONSUM | 1101.9 | 1121.6 | 1111.7 | 1098.4 | 1088.5 | 1075.2 | 1094.5 | 1098.8 | 52.0 | Bearish |
| TATATECH | 704.3 | 713.8 | 709.0 | 705.8 | 701.0 | 697.8 | 707.0 | 724.1 | 45.5 | Bearish |
| TATACOMM | 1768.3 | 1789.4 | 1778.9 | 1766.9 | 1756.4 | 1744.4 | 1768.4 | 1706.2 | 53.5 | Bullish |
| TCS | 3411.7 | 3433.1 | 3422.4 | 3415.4 | 3404.7 | 3397.7 | 3417.1 | 3439.8 | 67.6 | Bearish |
| TECHM | 1623.9 | 1661.5 | 1642.7 | 1629.1 | 1610.3 | 1596.7 | 1659.9 | 1673.5 | 52.7 | Bearish |
| TATAELXSI | 6175.0 | 6234.7 | 6204.8 | 6180.2 | 6150.3 | 6125.7 | 6198.5 | 6337.3 | 60.8 | Bearish |
| TIINDIA | 2940.2 | 3046.7 | 2993.4 | 2961.8 | 2908.5 | 2876.9 | 2992.6 | 2966.9 | 39.7 | Bearish |
| TORNTPOWER | 1440.8 | 1458.5 | 1449.7 | 1439.8 | 1431.0 | 1421.1 | 1449.8 | 1432.5 | 53.1 | Bullish |
| TATAPOWER | 401.2 | 406.2 | 403.7 | 401.1 | 398.6 | 395.9 | 403.1 | 400.9 | 54.0 | Bullish |
| TRENT | 5499.0 | 5569.3 | 5534.2 | 5487.3 | 5452.2 | 5405.3 | 5902.5 | 5881.4 | 28.9 | Bearish |
| TORNTPHARM | 3352.3 | 3386.8 | 3369.5 | 3355.2 | 3337.9 | 3323.6 | 3364.1 | 3269.7 | 61.5 | Bullish |
| TITAN | 3666.1 | 3718.1 | 3692.1 | 3670.0 | 3644.0 | 3621.9 | 3688.0 | 3572.6 | 73.6 | Bullish |
| TATAMOTORS | 688.9 | 696.7 | 692.8 | 688.1 | 684.2 | 679.5 | 688.1 | 689.7 | 41.3 | Bearish |
| TVSMOTOR | 2876.9 | 2907.6 | 2892.2 | 2877.2 | 2861.8 | 2846.8 | 2889.6 | 2835.2 | 65.2 | Bullish |
| UNIONBANK | 152.2 | 155.9 | 154.0 | 152.7 | 150.9 | 149.6 | 153.0 | 148.6 | 47.7 | Bullish |
| UNITDSPR | 1382.6 | 1407.3 | 1395.0 | 1382.5 | 1370.2 | 1357.7 | 1385.3 | 1447.6 | 71.0 | Bearish |
| UPL | 680.3 | 695.2 | 687.7 | 682.0 | 674.6 | 668.9 | 677.9 | 649.9 | 50.1 | Bullish |
| ULTRACEMCO | 12345.0 | 12577.7 | 12461.3 | 12383.7 | 12267.3 | 12189.7 | 12379.0 | 11773.9 | 64.4 | Bullish |
| VBL | 464.1 | 473.2 | 468.6 | 460.3 | 455.7 | 447.4 | 455.1 | 462.8 | 56.4 | Bearish |
| VEDL | 454.2 | 462.3 | 458.2 | 455.6 | 451.6 | 449.0 | 461.4 | 457.0 | 47.6 | Bearish |
| VMM | 127.5 | 130.6 | 129.1 | 127.8 | 126.3 | 125.1 | 130.0 | 129.3 | 47.6 | Bearish |
| VOLTAS | 1365.7 | 1386.6 | 1376.1 | 1358.1 | 1347.6 | 1329.6 | 1351.3 | 1312.8 | 50.4 | Bullish |
| WAAREEENER | 2917.0 | 3042.3 | 2979.7 | 2942.3 | 2879.7 | 2842.3 | 2983.4 | 2910.8 | 39.4 | Bullish |
| WIPRO | 267.8 | 271.8 | 269.8 | 268.5 | 266.5 | 265.3 | 267.3 | 264.3 | 52.1 | Bullish |
| YESBANK | 20.0 | 20.3 | 20.1 | 20.1 | 19.9 | 19.8 | 20.2 | 20.1 | 46.2 | Bearish |
| ZYDUSLIFE | 998.8 | 1011.5 | 1005.2 | 997.6 | 991.2 | 983.6 | 999.4 | 977.7 | 60.9 | Bullish |

Disclosure & Disclaimer :

HDFC Securities Limited (HSL) is a SEBI Registered Research Analyst having registration no. INH000002475.

This report has been prepared by HDFC Securities Ltd and is solely for information of the recipient only. The report must not be used as a singular basis of any investment decision. The views herein are of a general nature and do not consider the risk appetite or the particular circumstances of an individual investor; readers are requested to take professional advice before investing. "This report may have been refined using AI tools to enhance clarity and readability."

Nothing in this document should be construed as investment advice. Each recipient of this document should make such investigations as they deem necessary to arrive at an independent evaluation of an investment in securities of the companies referred to in this document (including merits and risks) and should consult their own advisors to determine merits and risks of such investment. The information and opinions contained herein have been compiled or arrived at, based upon information obtained in good faith from sources believed to be reliable. Such information has not been independently verified and no guaranty, representation of warranty, express or implied, is made as to its accuracy, completeness or correctness. All such information and opinions are subject to change without notice. Descriptions of any company or companies or their securities mentioned herein are not intended to be complete. HSL is not obliged to update this report for such changes. HSL has the right to make changes and modifications at any time.

This report is not directed to, or intended for display, downloading, printing, reproducing or for distribution to or use by, any person or entity who is a citizen or resident or located in any locality, state, country or other jurisdiction where such distribution, publication, reproduction, availability or use would be contrary to law or regulation or what would subject HSL or its affiliates to any registration or licensing requirement within such jurisdiction.

If this report is inadvertently sent or has reached any person in such country, especially, United States of America, the same should be ignored and brought to the attention of the sender. This document may not be reproduced, distributed or published in whole or in part, directly or indirectly, for any purposes or in any manner.

Foreign currencies denominated securities, wherever mentioned, are subject to exchange rate fluctuations, which could have an adverse effect on their value or price, or the income derived from them. In addition, investors in securities such as ADRs, the values of which are influenced by foreign currencies effectively assume currency risk. It should not be considered to be taken as an offer to

sell or a solicitation to buy any security.

This document is not, and should not, be construed as an offer or solicitation of an offer, to buy or sell any securities or other financial instruments. This report should not be construed as an invitation or solicitation to do business with HSL. HSL may from time to time solicit from, or perform broking, or other services for, any company mentioned in this mail and/or its attachments.

HSL and its affiliated company(ies), their directors and employees may; (a) from time to time, have a long or short position in, and buy or sell the securities of the company(ies) mentioned herein or (b) be engaged in any other transaction involving such securities and earn brokerage or other compensation or act as a market maker in the financial instruments of the company(ies) discussed herein or act as an advisor or lender/borrower to such company(ies) or may have any other potential conflict of interests with respect to any recommendation and other related information and opinions.

HSL, its directors, analysts or employees do not take any responsibility, financial or otherwise, of the losses or the damages sustained due to the investments made or any action taken on basis of this report, including but not restricted to, fluctuation in the prices of shares and bonds, changes in the currency rates, diminution in the NAVs, reduction in the dividend or income, etc.

HSL and other group companies, its directors, associates, employees may have various positions in any of the stocks, securities and financial instruments dealt in the report, or may make sell or purchase or other deals in these securities from time to time or may deal in other securities of the companies / organizations described in this report. As regards the associates of HSL please refer the website.

HSL or its associates might have managed or co-managed public offering of securities for the subject company or might have been mandated by the subject company for any other assignment in the past twelve months.

Please note that HDFC Securities has a proprietary trading desk. This desk maintains an arm's length distance with the Research team and all its activities are segregated from Research activities. The proprietary desk operates independently, potentially leading to investment decisions that may deviate from research views.

HSL or its associates might have received any compensation from the companies mentioned in the report during the period preceding twelve months from the date of this report for services in respect of managing or co-managing public offerings, corporate finance, investment banking or merchant banking, brokerage services or other advisory service in a merger or specific transaction in the normal course of business.

HSL or its analysts did not receive any compensation or other benefits from the companies mentioned in the report or third party in connection with preparation of the research report. Accordingly, neither HSL nor Research Analysts have any material conflict of interest at the time of publication of this report. Compensation of our Research Analysts is not based on any specific merchant banking, investment banking or brokerage service transactions. HSL may have issued other reports that are inconsistent with and reach different conclusion from the information presented in this report.

Research entity has not been engaged in market making activity for the subject company. Research analyst has not served as an officer, director or employee of the subject company. We have not received any compensation/benefits from the subject company or third party in connection with the Research Report.

HDFC securities Limited, I Think Techno Campus, Building - B, "Alpha", Office Floor 8, Near Kanjurmarg Station, Opp. Crompton Greaves, Kanjurmarg (East), Mumbai 400 042 Phone: (022) 3075 3400 Fax: (022) 2496 5066

Compliance Officer: Murli V Karkera Email: complianceofficer@hdfcsec.com Phone: (022) 3045 3600

For grievance redressal contact Customer Care Team Email: customercare@hdfcsec.com Phone: (022) 3901 9400

HDFC Securities Limited, SEBI Reg. No.: NSE, BSE, MSEI, MCX: INZ000186937; AMFI Reg. No. ARN: 13549; PFRDA Reg. No. POP: 11092018; IRDA Corporate Agent License No.: CA0062; SEBI Research Analyst Reg. No.: INH000002475; SEBI Investment Adviser Reg. No.: INA000011538; CIN - U67120MH2000PLC152193

Investment in securities market are subject to market risks. Read all the related documents carefully before investing.

Mutual Funds Investments are subject to market risk. Please read the offer and scheme related documents carefully before investing.

Registration granted by SEBI, membership of BASL (in case of IAs) and certification from NISM in no way guarantee performance of the intermediary or provide any assurance of returns to investors.